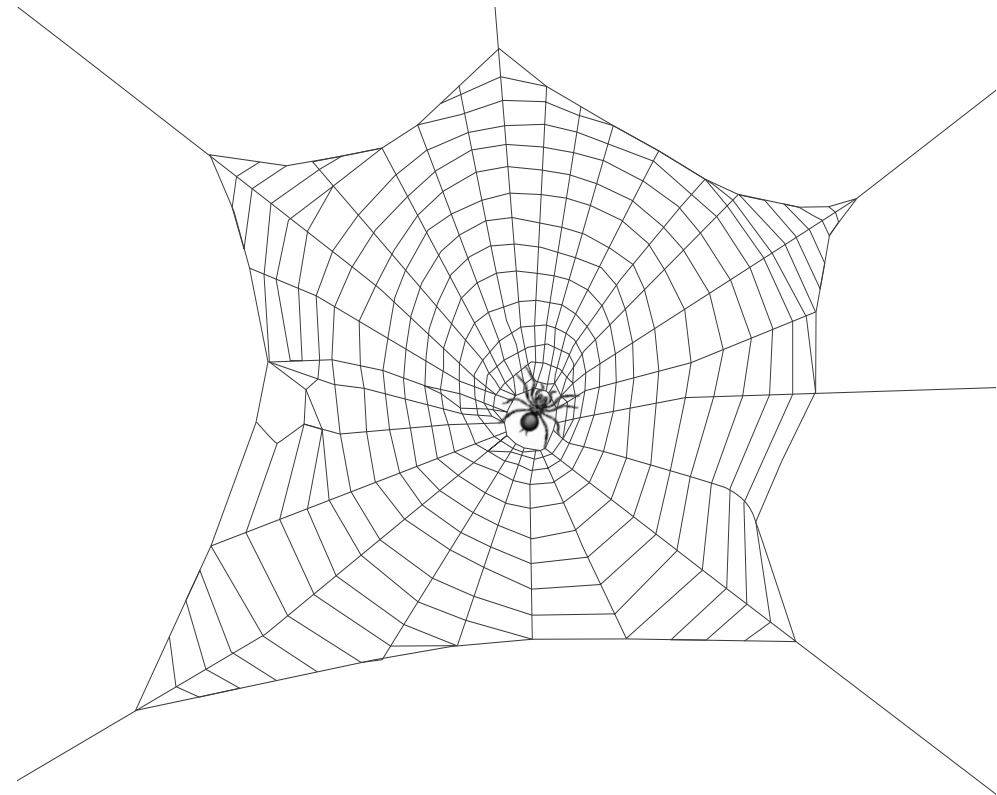


# SPIDERS

## SUSPENDED BETWEEN EARTH AND SKY

SPIDERS – SUSPENDED BETWEEN EARTH AND SKY — 

PETER FRASER



*There are a large number of Spider Remedies that have been proved and are now available and it is often difficult to differentiate between them. With the Spider Remedies the need for extremely precise and careful differentiation seems to be even more important than it is with other remedies. When a Spider Remedy is called for, those that are not exactly correct will often have very little or no significant effect and only the one that is indicated will be effective.*

*This book includes an understanding of the general Spider picture that will show the need for a Spider Remedy. It also includes a detailed picture of the known Spiders and their distinguishing features which can be used to differentiate between them.*

### TRANSFORMATION BETWEEN THE REALMS

*The remedies that move between the Realms of Sea, Earth, Sky and Underworld have a particular dynamic relationship to that transformation. Understanding this dynamic helps to understand the group as a whole and to find the subtle difference between its members. Groups include the Insects, the Birds, the Spiders, the Snakes, the Lacs, the Drugs and the Trees.*

*“Peter’s series of books has been a revelation. The discrimination between insects and birds is so succinct it is hard to believe it is so true. I can think of no homœopathic books available which give so much wisdom for such a small cost! They have inspired my practice, and benefited my patients.”*

*Geoff Johnson*

*“This book is remarkably informative, not only in the description of the different Insect remedies but more importantly in delineating how the traits of the insect are expressed in human pathology. The information is practical and brings alive the Insect remedies in a way that is exciting and inspiring.”*

*Janet Snowdon*



ISBN 9781-874581-192



9 781874 581192



**PETER FRASER**

TRANSFORMATION BETWEEN THE REALMS

## ABOUT THE AUTHOR

Peter Fraser was a bookseller and publisher before discovering Homœopathy. His work on many provings of new remedies led to an interest in contemporary disease which resulted in his book *The AIDS Miasm*.

Having done work on defining the properties of the Realms, he was fascinated by those creatures and substances that move between the Realms and the dynamic pictures generated by this movement which both defines the group and differentiates within it.

### OTHER WORKS BY PETER FRASER

#### **From Winter Press**

*The AIDS Miasm: Contemporary Disease and The New Remedies*

*The Using Maps and Systems in Homœopathy series:*

Using Realms in Homœopathy  
 Using Mappa Mundi in Homœopathy  
 Using Miasms in Homœopathy  
 Using Philosophy in Homœopathy  
 Using Correspondences in Homœopathy  
 Using Archetypes in Homœopathy  
 Using Provings in Homœopathy  
 Casetaking in Homœopathy

*Transformation between the Realms:*

Insects – Escaping the Earth  
 Spiders – Suspended between Earth and Sky  
 Snakes – Drawing power from the Underworld  
 Birds – Seeking the Freedom of the Sky  
 plus Drugs, Trees and Lacs

#### **On the Internet at [www.hominio.org](http://www.hominio.org)**

A Supplement to Clarke's Dictionary of Practical Materia Medica (an ongoing project).

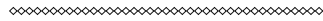
The full text of many new provings.

Articles and information on Peter's latest research and ideas.

## CONTENTS

Introduction . . . . .	2
Spiders - Suspended between Earth and Sky . . . . .	5
Spider Remedies in General . . . . .	10
Taxonomy . . . . .	19
Repertorizing. . . . .	22
Mygale lasiodora – Black Cuban Bird Spider. . . . .	23
Tarentula cubensis – Cuban Tarantula . . . . .	26
Atrax robustus – Sydney Funnel Web Spider . . . . .	27
Loxosceles reclusa – Brown Recluse Spider . . . . .	29
Pholcus phalangoides – Daddy-Long-Legs Spider. . . . .	32
Tegenaria atrica – Common House Spider . . . . .	35
Tarentula hispanica – Wolf Spider. . . . .	37
Portia fimbriata – Fringed Jumping Spider . . . . .	40
Aranea scinencia – Jumping Spider . . . . .	43
Aranea diadema – Cross Spider . . . . .	44
Aranea ixobola – Papal Cross Spider . . . . .	47
Latrodectus mactans – Black Widow Spider. . . . .	49
Latrodectus hasseltii – Redback Spider . . . . .	52
Theridion curassavicum – Orange Spider . . . . .	54
Lampona cylindrata – White Tailed Spider . . . . .	57
Tela – Spider's Web. . . . .	59

## INTRODUCTION



There are two types of symptom in any case. Most symptoms make up what can be seen as the background of the case. These are stable and distinctive and they will lead the prescriber to a group of remedies. Examples of the background are the Miasms, the Botanical and Zoological Families, the Periodic Table, the Realms and the Kingdoms.

It is sometimes possible to find the indicated remedy by cross referencing the various background features of the case. This approach has great appeal as it appears to be ordered and systematic and does not require a detailed knowledge of the remedies. In fact a completely unknown remedy can be prescribed purely on its relationship to other known remedies. However, this approach is not as easy to work with as it seems as the slightest misunderstanding in classifying the case will lead to the wrong remedy.

The background in the case will usually lead to a group of remedies and it is differentiating within the group and finding the specific group member indicated in the case that is the most difficult part. Although other backgrounds do differentiate somewhat there is usually a correspondence between different backgrounds. Many remedies that are of the Sea Realm are also Phlegmatic in nature and so

knowing that a case is both of the Sea and Phlegmatic is not very specific.

The foreground is the place in a case where there is dynamic energy and movement. It is the place where the patient becomes animated and where the symptoms are changing and contradictory. This is the place that restricts, that prevents the patient from moving on and growing but it is also the place through which they will move and grow. This is perhaps the most distinctive feature of the foreground of the case, it is as positive as it is negative and it is as healing as it is destructive. It is also unusual, individualistic and characteristic. No one else expresses it in quite the same way and for no one else would it quite make sense in the way it does for the patient. It is also something that appears in different aspects of the case but with the same distinct character. The foreground is what Hahnemann refers to as the totality of the characteristic symptoms.

Finding the foreground in a case gives you a deep insight into the patient and without understanding this aspect of their life it is very difficult to understand the case and to discover what it is that is to be cured.

Finding the foreground features in a case requires attention to the patient's way of expressing him or herself and of describing his or her symptoms. The key indicators are animation and contradiction and wherever either of these appear in a case they need to be pursued because here will be found the information that allows an accurate dif

## SPIDERS - SUSPENDED BETWEEN EARTH AND SKY

---

The most distinctive feature that separates the Spider from other creatures is its ability to spin silk. While not all spiders use their silk to spin a web and only a few to spin the ordered web we generally think of; this is still the archetype of what the Spider is and so informs all spiders in some way. The web hangs suspended in the Sky but in order to function it must be anchored to the Earth in some way. At the centre of the web sits the spider motionless but in a state of tension and awareness, sensitive to the tiniest movement anywhere on the web.

Thus although the Spider has left the ground it is still tied to the Earth and though it is in the air it is not fully of the Sky. The confusion and disorientation of being neither in one place nor the other is widespread and can be found in many areas – a disconnection from time, disorientation and clumsiness, making mistakes and weakness of memory, and even confusion of identity.

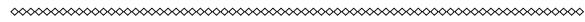
The clearest and most distinctive confusion in Spider remedies lies in a state of awareness without under-

standing. The Spider knows exactly what is happening both in the Realm of the Sky and the Earthly Realm but has no proper understanding of what this means. Having no real connection to the Sea or the Underworld they cannot comprehend the emotional or instinctual content of what they know. The most extreme form of this is Autism and Spider remedies can be indicated right across the autistic spectrum.

The Birds, though they must return to the ground for all the earthly functions, are fully committed to the air when they are flying. Their spiritual connection through the Realm of the Sky is complete and functional so they have a deep empathetic connection with people and they understand people on a deep and spiritual level. The Snakes is another group that knows other people very well. Their knowledge comes through the Underworld and is generally clairvoyant in nature and it is particularly clear about the instinctual or animal aspects of people. The Spiders, through their sensitivity, have knowledge of people but no understanding of them. They know exactly how people are but they have no real understanding of what this means.

The Spider is sensitive to what is happening in the environment, but having no way of grounding and regulating this sensitivity it almost invariably runs out of control and becomes a hypersensitivity. The least disturbance to any sense is noted and magnified. The Spider on her web picks up most easily vibrations which are detected through hairs on her legs. It is thus vibration, in its earthly form of touch and in its airborne form of sound to which the Spider is most sensitive. The other senses of sight, smell

## SPIDER REMEDIES IN GENERAL



The spiders are one of the most homogenous groups of remedies and they all share what are basically the same symptoms. There are very few symptoms that are characteristic of only one of the family. The differentiation between them will therefore almost always be difficult and rely on comprehending the slightly different emphasis in the common symptoms.

Finding where this emphasis lies is not as easy as it may sound. It may not be where most of the symptoms occur or where they are strongest but it will always be where there is dynamic activity, where there is contradiction, conflict or some sort of dilemma. It is always a matter of quality rather than quantity. The fact that a patient has a great number of symptoms in one particular area of the overall Spider picture may be helpful, but it is never as important as the fact that an area of the picture is dynamic, changing and brings the patient into an internal conflict.

In order to differentiate between the spider remedies it is important to build up a clear picture of the overall spider group.

The first symptom of the Spider is restlessness. The Spider patient is never still, always in motion. This restlessness arises from an abundance of nervous energy that

is very difficult to control and is always on the edge of running amok.

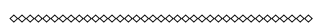
Many of the symptoms of the spiders come out of the tactics used to try and control and release this nervous energy. It comes out in great activity but often this activity is not regulated enough to be productive and becomes fruitless and unproductive. Physically it is often expressed as uncontrollable movement, chorea and twitching.

One way of controlling this energy is to use an outer influence to pace it. This is why they are ameliorated by rhythmic music. By allowing the music to dictate the pace of their energy they can slow it down and bring it into a more controlled and productive form. Periodicity is another version of the same thing. By linking their activity to the rhythms of the Earth, whether they be the rhythms of the day, the month or the year, activity is given pace, is regulated and so can be more productive. Thus symptoms are also likely to be paced by external rhythms and so to become periodic in their appearance and modalities.

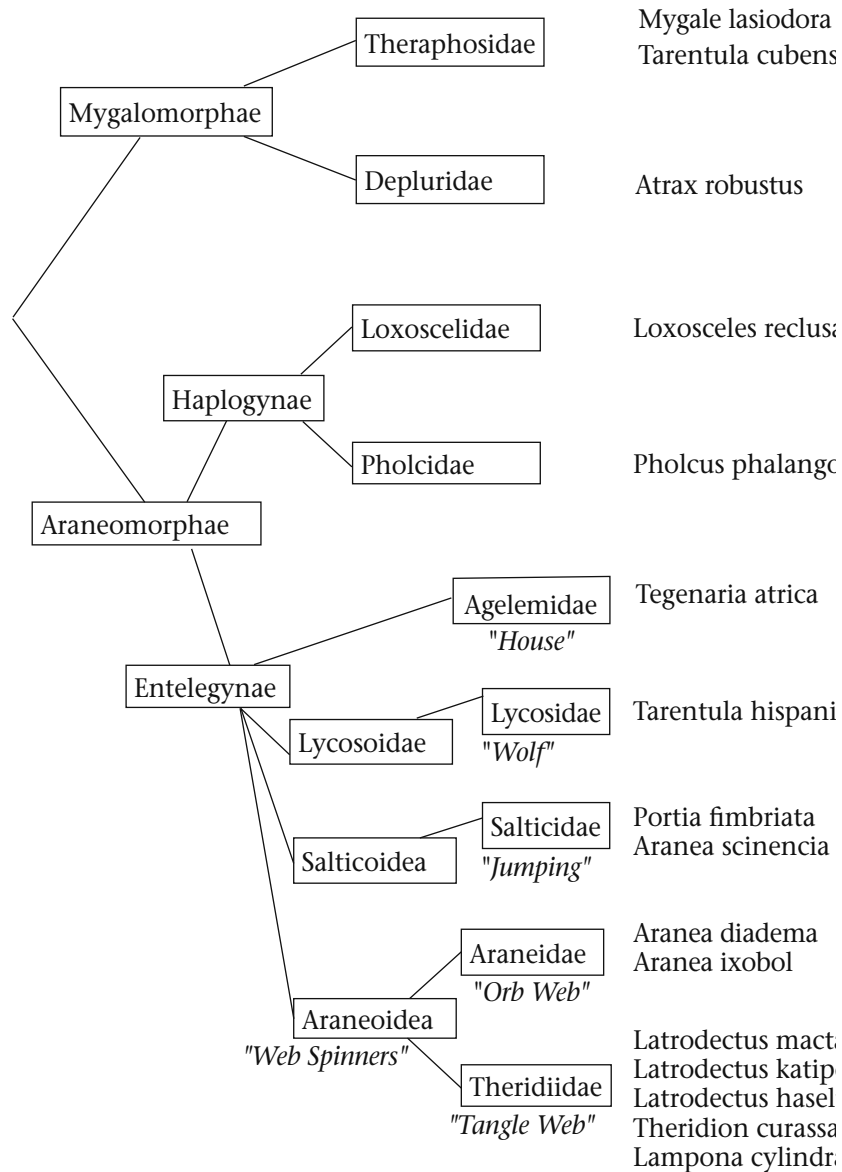
When the nervous energy does not have a regulated and productive outlet it tends to be held in great tension. There is a feeling of tension about the spiders. They are like coiled springs always ready to be released in explosive action or emotion. Physical symptoms can also be tense in nature and tension or tense pain is found generally, particularly in the head, back and limbs.

Anxiety and restlessness are common bedfellows but in this, as in most things, spiders have a perverse take on it. In most remedies, Arsenicum being the obvious example, restlessness arises out of anxiety. Because they are so anxious...

# REPERTORIZING



## THE SPIDER'S FAMILY TREE



The Araneomorphae include the majority of spiders. They are more developed and have crossing fangs which are better able to inject their venom. It has two major groups: the Haplogynae which includes *Loxosceles reclusa* and *Pholcus phalangoides* and the Entelegynae, which is the largest family of spiders and is divided into many groups.

The Salticoidea contains the Salticidae, Jumping Spiders, of which *Aranea scinencia* and *Portia fimbriata* are examples. The Agelemidae which includes *Tegenaria atrica*. The Lycosoidea contains the Lycosidae, Wolf Spiders, which includes *Tarentula hispanica*. The Araneoidea, Web Spinners, include the Araneidae, Orb Web Spiders, *Aranea diadema* and *Aranea ixobola*; and the Theridiidae, Tangle Web Spiders, including *Theridion curassavicum*, *Lampona cylindrata*, and the *Latrodectus* species: *mactans*, *haseltii* and *katipo*.

In terms of behaviour of the spiders there is a division between the hunters and the trappers. The Araneoidea, web spinners, trap their prey in their webs while most other spiders either ambush or hunt and chase their prey. Spider silk can be used not only in webs but to build ambush hides or to catch and disable prey.

Another interesting differential between the spiders is their type of venom. Most of the spiders use a neurotoxin that interferes with nerve transmission leading to paralysis and kills by preventing respiration or stopping the heart. The venom of the *Loxosceles reclusa* is necrotoxic causing the flesh around the bite to die. The venom of the *Lampona cylindrata* is also necrotoxic but not reliably so. It seems that the venom causes enough damage to sometimes, but not always, allow infection to set in. The venom may contain bacteria to promote such infection.

Using the repertory with the Insect remedies is very difficult. When using the repertory with the spiders it is worth knowing how well represented each of them are. The following table shows how many rubrics include each of the spider remedies (taken from Synthesis 9.1). The second figure is the number of those rubrics which also contain *Tarentula hispanica*. Only the top four spiders are included in 500 or more rubrics. So it is unlikely that the others will figure largely in any repertorisation. *Tarentula* is the only well represented spider. Given the similarity between the spiders any repertorisation that comes up as *Tarentula* could indicate any of the spiders. If one of the smaller ones is well represented then it is more likely to be well indicated.

<i>Tarentula hispanica</i>	2,753
<i>Theridion curassavicum</i>	996 / 210
<i>Latrodectus mactans</i>	580 / 180
<i>Aranea diadema</i>	536 / 143
<i>Loxosceles reclusa</i>	305 / 98
<i>Atrax robustus</i>	278 / 63
<i>Mygale lasiodora</i>	152 / 64
<i>Aranea ixobola</i>	139 / 56
<i>Tarentula cubensis</i>	135 / 44
<i>Latrodectus haseltii</i>	120 / 53
<i>Tela</i>	32 / 20
<i>Aranea scinencia</i>	30 / 12
<i>Latrodectus katipo</i>	15 / 7

(Excerpts from 3 pages, thought more useful to the reader...)

BOOK TEXT CONTINUES, END OF THIS SECTION EXTRACT



### TARENTOLO CUBENSIS – CUBAN TARANTULA

There is no certainty as to which spider was used though it was probably one closely related to *Mygale*. The jar containing the spider in alcohol was broken in shipping and the remedy was made from the decaying remains. The septic nature of the remedy perhaps comes from this rather than purely from the spider. It is one of the most important remedies for large, dark blue, burning carbuncles and bubos and so is an important remedy also for bubonic plague and anthrax.

The other symptoms are a hypersensitivity particularly of the genitals that leads to sexual excitement. There is a general amelioration by rubbing, usually the hands and legs but sometimes the head or body. They have a sympathetic and compassionate nature. The cough prevents sleep and causes involuntary urination and there are chills followed by the intense burning pain that is the keynote of the remedy.



### ATRAX ROBUSTUS – SYDNEY FUNNEL WEB SPIDER

The Sydney Funnel Web Spider is the most dangerous of the spiders to human populations in Australia; for unlike the Redback which tends to stay in the countryside, the Funnel Web is common in the city and is happy to enter into houses.

The venom causes a state of excitement followed by stupor, hypothermia and death. The Funnel Web Spider is one of the most aggressive of the spiders, most of them only bite as a last resort but *Atrax* seems to bite anything that disturbs it and bites immediately. It lies apparently comatose but strikes immediately if anything approaches it. It has powerful fangs that have been known to penetrate shoe leather and fingernails and it requires a strong blow to dislodge it after it has bitten. It will also bite repeatedly until it has exhausted its supply of venom. It will then retire to replenish its supply which may take as long as a week.

Exhaustion is a major feature of the remedy and it comes first on waking and then gradually dissipates during the day but is also notable in the evening and at night. The dynamic centre of the remedy would seem to be that *Atrax robustus* is always ready for battle. There is hatred and suspicion and they are always up for a fight with anyone or anything that enters their territory or threatens to damage their interests. Not only is the fight, when it does come about, exhausting but even the



## PHOLCUS PHALANGOIDES – DADDY-LONG-LEGS SPIDER

The Daddy-Long-Legs Spider is a common domestic spider found in most parts of the world. Its extremely long legs make it similar to the other Daddy-Long-Legs, the Harvestmen and the Crane flies. It is known as the Cellar Spider for its affinity to cellars as it evolved to live in caves. It is also known as the Skull Spider for the distinctive marks on its cephalothorax. When disturbed the spider spins its body around on its legs which makes it harder for predators to catch it. It is therefore sometimes known as the Spinning Spider. There is a myth that it has the most toxic of spider venoms but its fangs are too weak to penetrate human skin. In fact its bite can penetrate skin but its venom is pretty harmless. It pounces on its prey and ties it up very quickly. It then covers it completely in silk and makes a small hole through which it injects digestive juices.

It eats insects that are caught in its chaotic web which usually hangs down from the corners of cellars. It also eats other spiders. It draws them out by using its long legs to vibrate their webs in imitation of an insect caught in the web. The male dies soon after mating but the female lives much longer. She carries the eggs in a net hanging from her mouth until the spiderlings hatch.

The remedy was proved by Gregor Kindelmann. It expresses many of the common spider symptoms such as nervous tension, fear and aggression. Like other spiders it is strongly ameliorated by music and dancing.

One of its strongest features is a sense of isolation and a powerful indifference and lack of concern about what is going on around it. This was accompanied by a lack of motivation and no ability to get things under way. These features are also found in *Loxosceles reclusa* and so it may be a feature of the Haplogynae in general.

There are drugged and floating sensations, with the feeling that the arms are floating upwards. Concentration is difficult. However, the head feels heavy and the sensation that the neck is too weak to support the head.

One of the provers developed a powerful hatred of a particular person who had offended her and let her down. She felt unreasonably aggressive and vengeful, wishing to kill and destroy this person, and was obsessive in her thoughts about this person.

Another prover was cured of many physical symptoms including tinnitus and found her repetitive and obsessional thoughts were smoothed out. She was less ambitious and more able to accept things as they happened.

The senses of smell and taste are the ones that seem to be particularly sensitive in this spider. There is a metallic taste in the mouth and a sweet smell of blood or an earthy smell in the nose.

It is a strongly left sided remedy and has a strong affinity to the heart. There were tensions and fluttering in the region of the heart, with palpitations and the feeling of having over exerted herself.





## PORTIA FIMBRIATA – FRINGED JUMPING SPIDER

The Portia Spider is a small insignificant looking jumping spider from the rain forests of Australia and areas of South East Asia. It looks extraordinary with cryptic markings in beige and brown and fringes and tufts of brown hairs. This appearance is enhanced with pieces of leaf and rubbish that cling to the hairs. This camouflage means it is able to disappear completely into the detritus of the forest floor.

The Portia Spider is araneophagic and not only uses an extraordinarily diverse range of tactics in hunting its prey, which are often larger and more venomous, but it is able to vary and adapt those techniques and learn when they have been successful. Their primary technique is to mimic a spider's prey that is caught in the web. It does this by vibrating the web. With species that it has encountered before it uses the type of vibration that has been successful with that species in the past. With species it does not know it tries a random sequence of different vibrations until it finds one that achieves a reaction. It then concentrates on this form and remembers it for next time. It is incredibly patient and has been observed to spend 3 days on a web trying to get the owner's attention. It can also lure female spiders out of their nests by imitating the mating movements of the males. A third technique is to stalk a victim on the forest floor using

its slow and stealthy movements and its fantastic camouflage in order to get close enough to pounce. When hunting prey weaker than itself it will usually take them head on but with prey that is bigger and more venomous it manages to make sure that it always attacks from behind. Mating takes place in the air suspended by silk threads. Although in most species of Portia the female devours the male during or soon after mating such behaviour has not been commonly observed in *P. fimbriata* where the male usually makes it through mating intact. Portia has extremely good eyesight.

The proving of *Portia fimbriata* was conducted by Brigitte Klotzsch.

The Portia Spider is undoubtedly one of the cleverest and most devious creatures in the animal kingdom. It is able to use many diverse hunting strategies and vary them according to circumstance and learn from its experience.

Its primary technique is to imitate weakness and illness in order to lure and surprise its victims. *Tarentula* feigns illness but it is mainly in order to attract attention and sympathy. Portia uses it much more carefully in order to attack or exact revenge. Provers experienced sensations as if pregnant, as if something is moving in the abdomen or as if giving birth, and false pregnancies or even real ones used to control and disempower must be a part of the picture.

Unusually for a Spider Remedy Portia is very hot, however it is still very sensitive to colds, drafts and chills. It has heat and perspiration at the least exertion. Respiration is also difficult on any exertion.

It is a strongly right sided remedy and also has the peculiar sensation that the right side of the body is enhanced while the left side is diminished. It also has, like *Baryta*, the sensation that the legs are cut off at the knees.